

Universidad de Costa Rica  
Facultad de Ciencias Básicas  
Escuela Centroamericana de Geología  
Geología Numérica

# *Terremoto de Océano Índico*

## *2012*

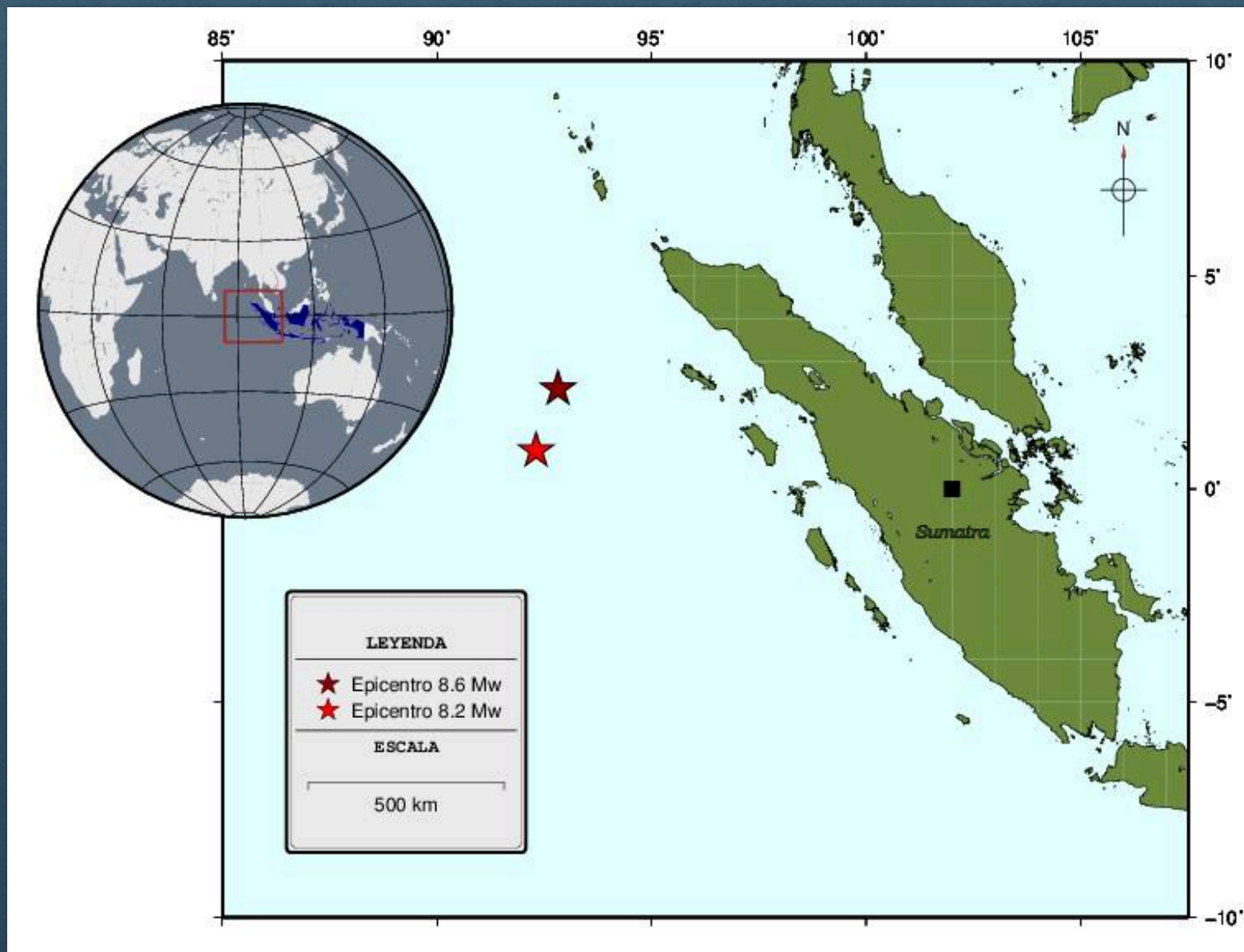
Realizado por :Yenory Segura A.

Fecha: 11 de abril, 2012  
Hora: 15:38 (hora local)

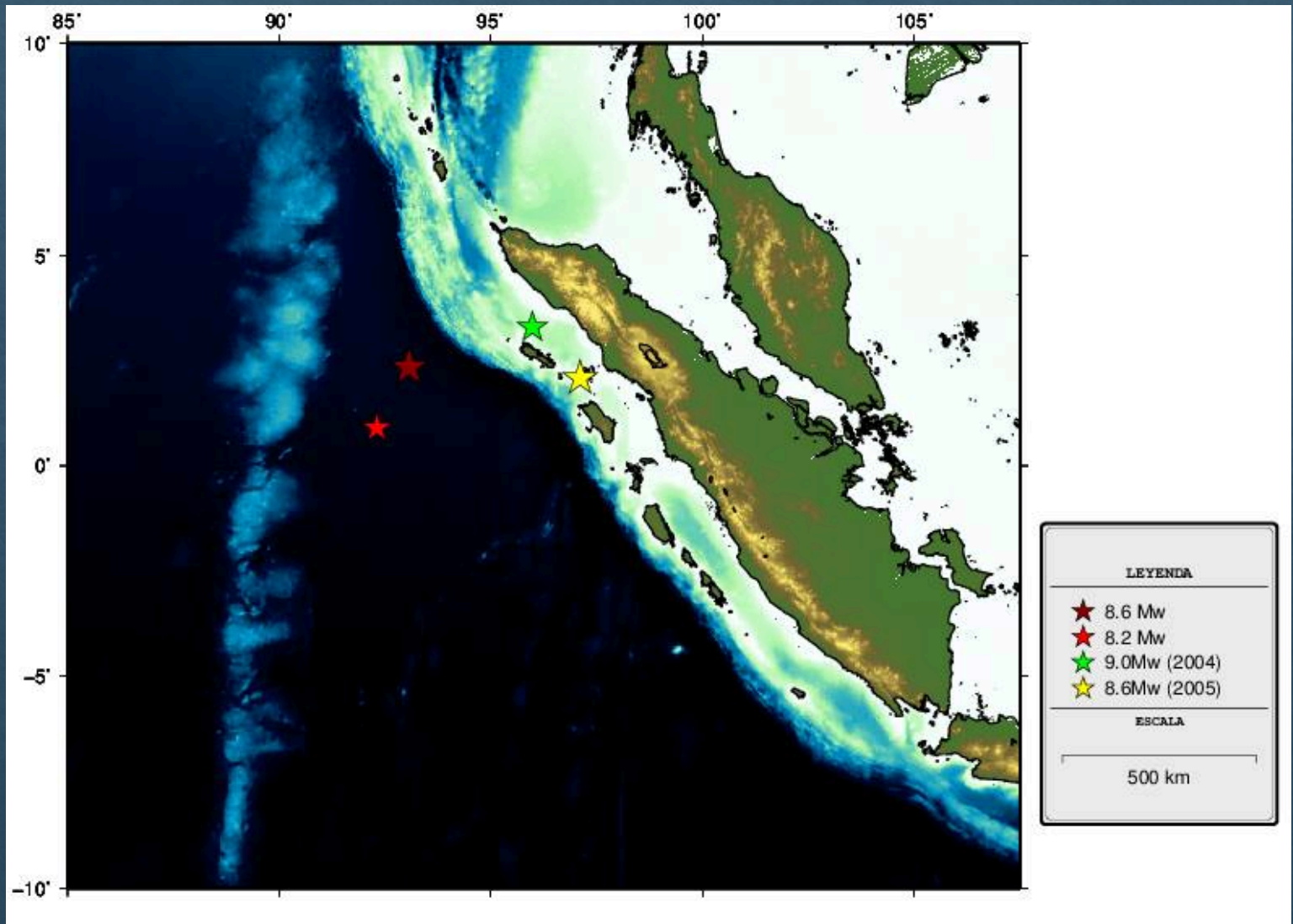
Magnitud: 8.6Mw  
Replica: 8.2 Mw

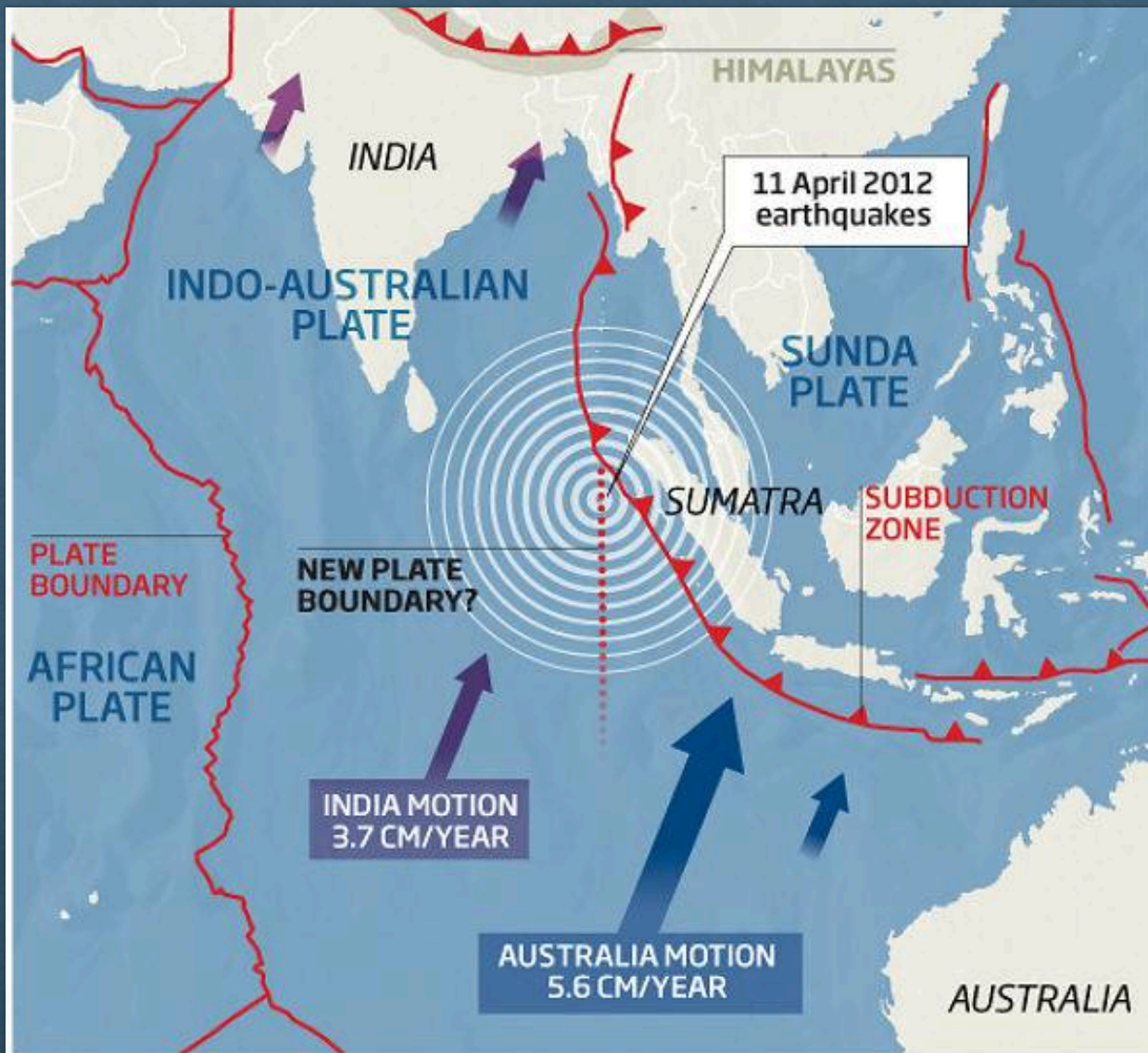
Profundidad: 20km

# Mapa de Ubicación

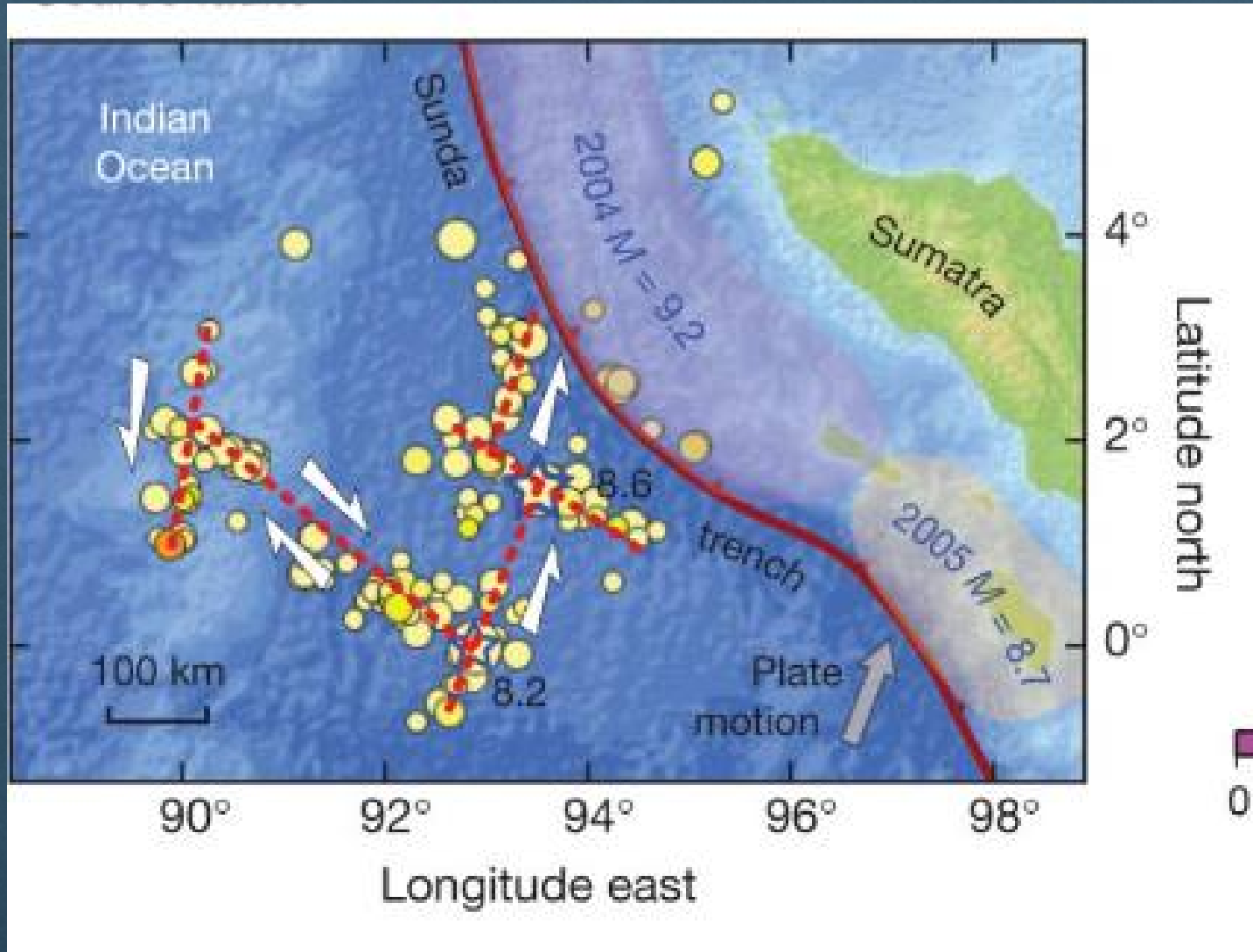


## Contexto tectónico de la zona

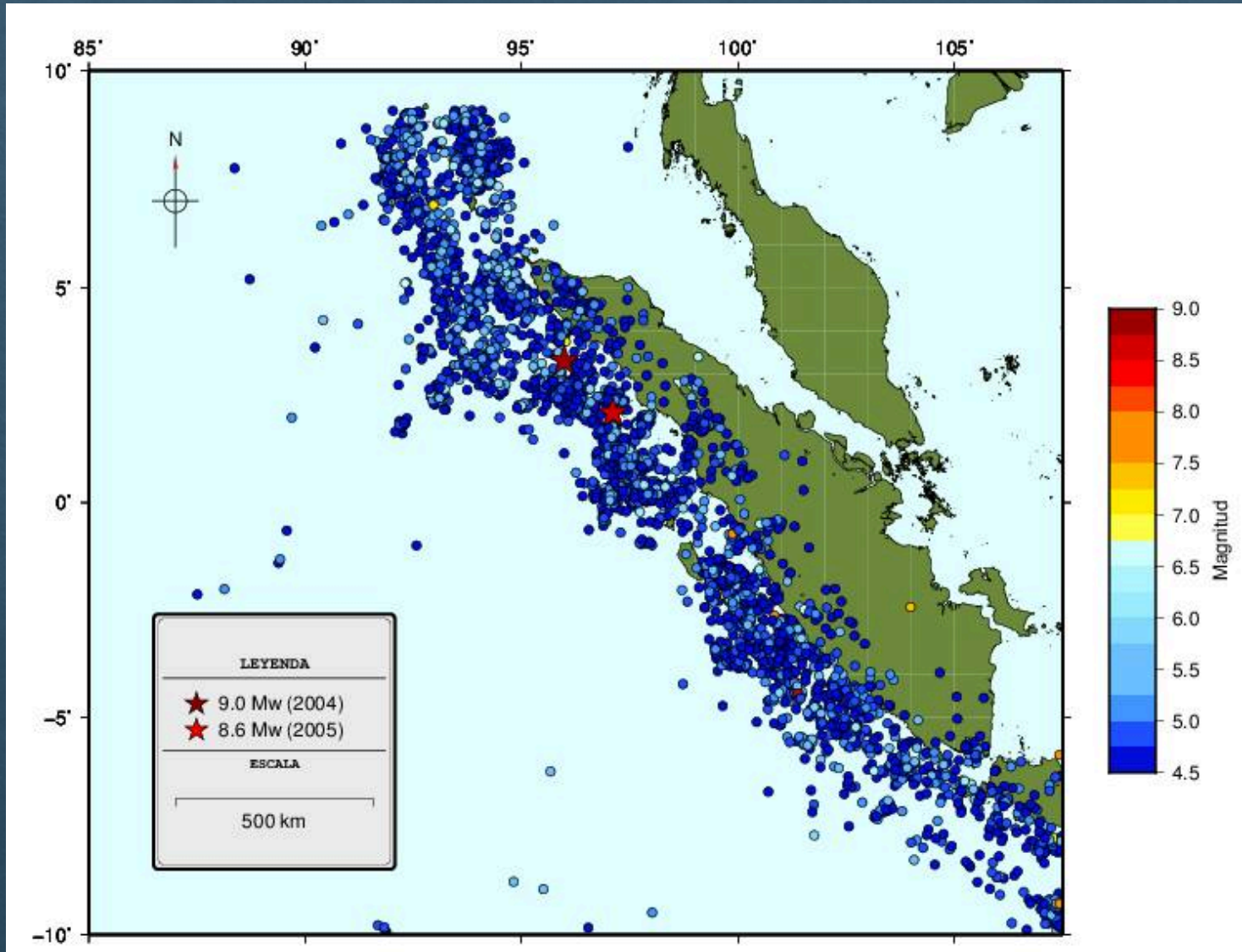




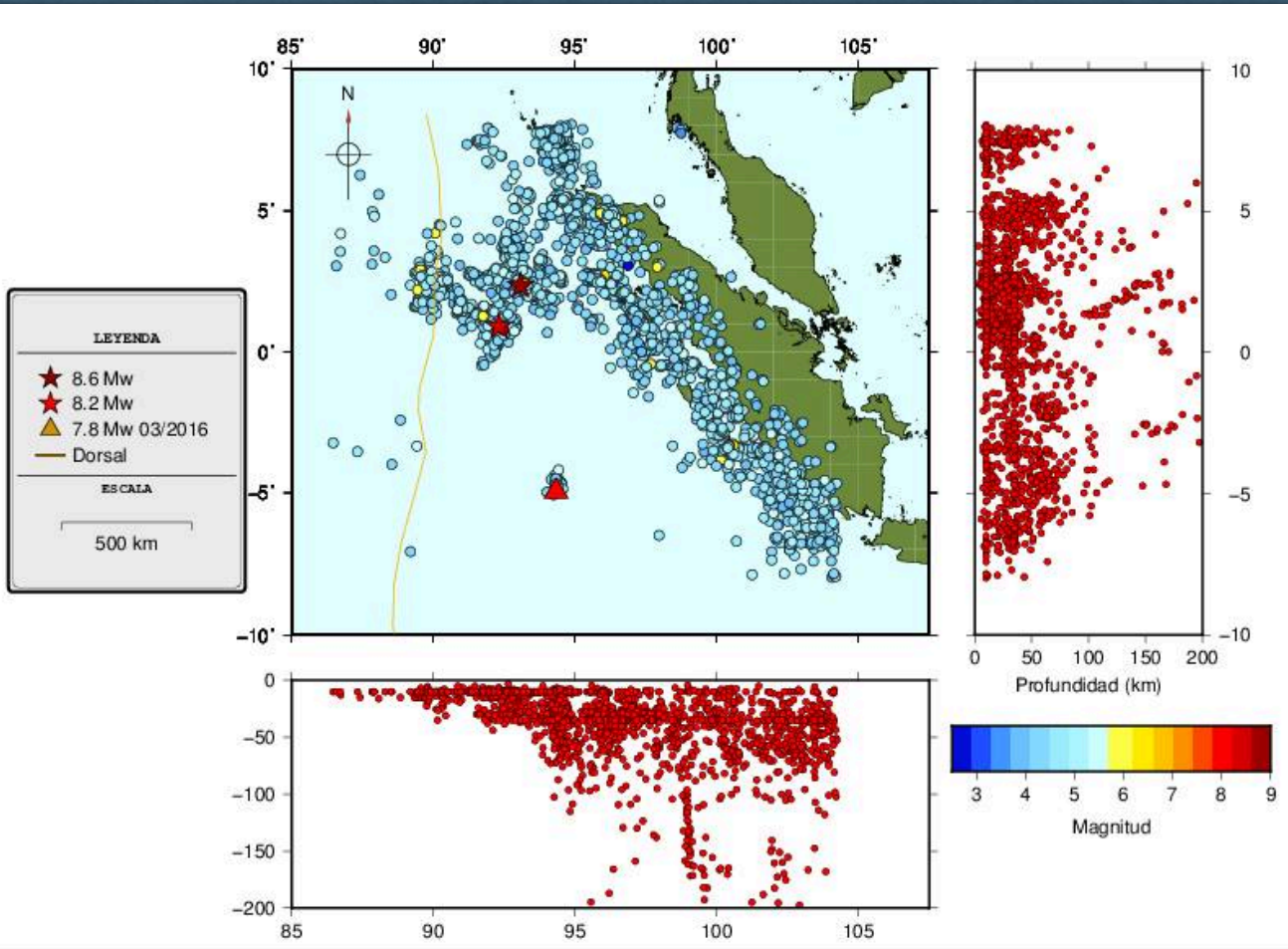
The Indo-Australian plate is moving north, but the Himalayas are impeding the western half of it. The result is an area of compression in the centre of the plate, which may be cracking under the strain



# Sismicidad previa



# Perfiles de profundidad de la actividad sísmica posterior al evento principal





# Mecanismos focales

